



OTTO 750 v2

Top-tier performance in a cost-efficient package

The new, improved OTTO 750 is a workhorse AMR designed to reliably move heavy payloads through demanding environments with class-leading speed and agility, all while improving workplace safety.



Superior Performance

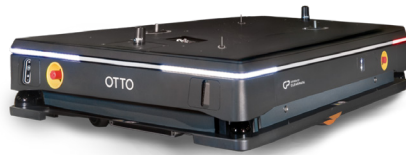
With a rugged all-metal body construction and industrial grade components, OTTO 750 doesn't cut corners. At top speeds of 2 m/s and 1,150 kg payload capacity, it's built for demanding material handling applications.

Proven Intelligence

Build on over 3,000,000 hours of driving experience, OTTO 750 is smart enough to operate autonomously for mission-critical work in the most dynamic manufacturing environments.

Comprehensive Service

Comprehensive 24/7 fleet service plans ensure your AMRs are always operating at peak performance. Managed service plans are also available for improved planning and predictability.



OTTO 750 v2

The new, improved OTTO 750 is a cost-efficient workhorse AMR designed to reliably move heavy payloads through demanding environments faster than any other AMR on the market with zero compromise to safety. OTTO 750 is build for mission critical applications and designed to move loads up to 1,150 kg

PERFORMANCE			
Max. Payload	1150 kg (2535 lbs)	Max. Turning Speed	1.5 rad/sec (90°/sec)
Max. Speed	2.0 m/s (4.5 mph)	Max. Docking Speed	0.3 m/sec (0.7 mph)
Docking Accuracy Standard	± 10mm (x,y), ± 1°φ (yaw) Repeatable to 3σ	Min. Aisle Width (One Way)	1915 mm (78 in)
Docking Accuracy Precision Upgrade¹	± 5mm (x,y), ± 1°φ (yaw) Repeatable to 3σ	Min. Aisle Width (Two Way)	3570 mm (146 in)
CHASSIS			
Dimensions	1837 x 1283 x 351 mm (72.3 x 50.5 x 13.85 in)	Suspension	Passive, Rocker
Mass	627kg (1382 lbs)	Ground Clearance	37.5 mm (1.5 in)
Turning Radius	0 mm (0 in)	Traversable Gap	31 mm (1.25 in)
ENERGY SYSTEM			
Battery Capacity	70 Ah	Battery Voltage	52.8 V
Runtime (10% to 90%)	10 hr	Battery Life	10,000 full charge cycles
Max. Charge Rate	98 A	Est. Battery Replacements (5yr)	0
Charge Time (10% to 90%)	34 min	Battery Charging Options	Autonomous Opportunity Charging (Default) Manual Charging
SAFETY SYSTEM			
Intelligent Braking	Redundant monitoring with safety-system interlock	Standards Compliance	ISO EN 12100, ISO EN 13849-1, ISO 3691-1 (supercedes EN 1525), EN 60204-1, CE, FCC
Adaptive Fieldsets	Intelligent PL-d rated switching fieldsets (patent-pending)	Manual Control	Pendant-based manual control. Guided autonomous control available via OTTO software interface.
E-Stop	4 E-Stops (1 per side) + user E-Stop circuit interface		
AUTOMATION INTERFACE		CONTROL SYSTEM	
Power Interface	24 VDC, 10A, regulated, unswitched	Sensors	4x Intel RealSense Cameras 2x SICK Microscan3 (360° FOV) Embedded 6-axis IMU
Signal Interface	1x Ethernet, 1x USB 3.1, 1x HDMI 1 CAN Bus, 5 GPIO (2 safety rated) 1 interface control line	Computer	Solid-state Military Spec Computer with Intel i7-6700TE Quad Core, 16BG RAM, nVidia GTX-1050
Safety Interface	Dual-channel E-Stop breakout, 2 safety-rated GPIO, 1 interface fault line	Communication	802.11 a/b/g/n/ac/ax, 2.4 Ghz & 5 Ghz 2x Long-range Omnidirectional Antennae
ACCESSORIES (Sold Separately)		ENVIRONMENTAL	
Load-Handling	750 kg (1650 lbs) Hydraulic Lift 750 kg (1650 lbs) In-line Conveyor 1150 kg (2535 lbs) Load plate	IP Classification	IP20
Charging	Autonomous Supercharger (98 A) Manual Trickle Charger (25 A)	Temperature	0 to 40°C
		Max. Humidity	95%, non-condensing

Footnotes:
¹ Requires OTTO High Accuracy Docking System (HADS) upgrade, sold separately

For more information visit www.romias.com
or call us at **+31(0) 547 388 599**